

YANG LI
AFTER ZERO HOUR AW12/13

零
辰
後



YANG LI
AFTER ZERO HOUR AW12/13































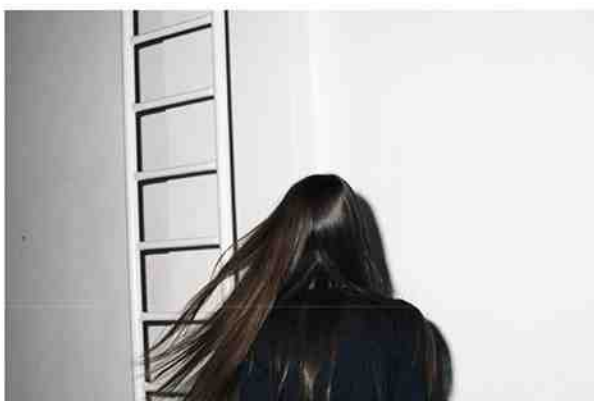


















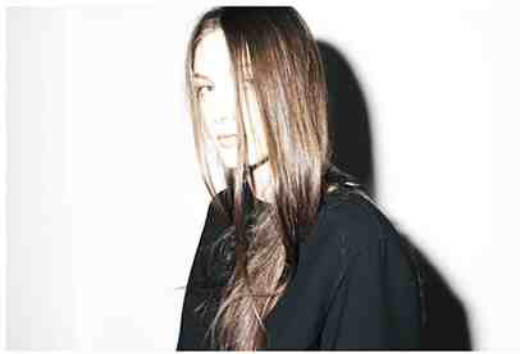




















- 01:01 - F3011 BIG SKIRT WITH POCKETS / F6015 DOUBLE FACED RIDERS JACKET
- 01:02 - F6015 DOUBLE FACED RIDERS JACKET / F4015 CARGO PANTS
/ F5013 TAILORED BLAZER WITH REAR PLEATS
- 01:03 - H4014 CLASSIC WIDE PANT / H1014 DOUBLE FACED CREW NECK
- 01:04 - F4012 PLEATED SKATE SHORTS / F1015 DOUBLE FACED SHORT SLEEVE TOP
- 01:05 - F4015 CARGO PANTS / F6015 DOUBLE FACED RIDERS JACKET / F 6013 DOUBLE FACE MA1
- 01:06 - F7016 DOUBLE FACED LONG SLEEVE DRESS
- 01:07 - F6015 DOUBLE FACED RIDERS JACKET / F3013 DOUBLE FACED FLOOR LENGTH SKIRT
/ F6012 DOUBLE FACED CROPPED TRENCH WITH EXTENDED LINING
- 01:08 - F3013 DOUBLE FACED FLOOR LENGTH SKIRT / F1012 DOUBLE FACED RIDERS TOP
- 01:09 - F4012 PLEATED SKATE SHORTS / F2013 M65 SHIRT
- 01:10 - H2015 SHIRT WITH CHEST POCKETS / H 4014 CLASSIC WIDE PANT
/ H4014 DOUBLE FACED REVERSIBLE HOODED PARKA / F 6013 DOUBLE FACE MA1
- 01:11 - F4015 CARGO PANTS / F8015 LONG COAT WITH PATCH POCKETS / F2012 SHIRT WITH FIN
- 01:12 - F3013 DOUBLE FACED FLOOR LENGTH SKIRT / F1012 DOUBLE FACE RIDERS TOP
/ F8011 DOUBLE FACED CARDIGAN COAT
- 01:13 - F9011 SLEEVELESS ALL IN ONE
/ F6012 DOUBLE FACED CROPPED TRENCH WITH EXTENDED LINING
- 01:14 - F6015 DOUBLE FACED RIDERS JACKET PLEATED SKATE SHORTS
- / F1016 DOUBLE FACED BOMBER CARDIGAN
- 01:15 - H4017 CLASSIC SLIM PANT / H1011 DOUBLE FACE T-SHIRT
/ H5011 REVERSIBLE DOUBLE FACED BLAZER
- 01:16 - F4012 PLEATED SKATE SHORTS / F2013 M65 SHIRT
/ H4014 DOUBLE FACED REVERSIBLE HOODED PARKA
- 01:17 - H4013 5 POCKET PANT / H1011 DOUBLE FACE T-SHIRT
- 01:18 - H5012 CLASSIC SUIT / H2015 SHIRT WITH ZIPPED CHEST POCKETS
- 01:19 - F8012 FLAT CUT PARKA
- 01:20 - H4013 5 POCKET PANT / H2015 SHIRT WITH ZIPPED CHEST POCKETS
- 01:21 - F4015 CARGO PANTS / H2011 MINIMAL SHIRT
- 01:22 - F4011 WIDE PANT WITH PATCH / F8015 LONG DOUBLED FACE COAT
/ DOUBLE FACED M65 JACKET / F1013 LONG SLEEVE DOUBLE FACED TOP
- 01:23 - F7013 FLAT CUT DRESS WITH BELT
- 01:24 - F4016 SLIM PANT WITH FIN / F2012 SHIRT WITH FIN
- 01:25 - H1011 DOUBLE FACED T-SHIRT / H5012 CLASSIC SUIT / H8014 LONG COAT
- 01:26 - H5011 REVERSIBLE DOUBLE FACED BLAZER / H4014 WIDE PANTS / H8014 LONG COAT
- 01:27 - F4015 CARGO PANTS / F8012 FLAT CUT PARKA
- 01:28 - F7015 MINIMAL LONG SLEEVE DRESS / F5014 DOUBLE FACED LONG TAILORED JACKET
- 01:29 - F9011 ALL IN ONE SUIT WITH GRAPHIC BAR TACKS / F6015 DOUBLE FACED RIDERS JACKET
- 01:30 - 7016 DOUBLE FACE LONG SLEEVE DRESS / F3013 DOUBLE FACED FLOOR LENGTH SKIRT
- 01:31 - H4017 CLASSIC SLIM PANT / F6013 DOUBLE FACED MA1 / H1011 DOUBLE FACE T-SHIRT
- 01:32 - F3012 FLAT CUT SKIRT / H2011 MINIMAL T-SHIRT / F1016 DOUBLE FACED BOMBER CARDIGAN
- 01:33 - F4015 CARGO PANTS / H4014 DOUBLE FACED REVERSIBLE HOODED PARKA
- 01:34 - F6015 DOUBLE FACED RIDERS JACKET + F4015 CARGO PANTS + F5013 TAILORED BLAZER WITH
REAR PLEATS



